



SPRING PRODUCTION SALE

15th Annual

Friday Night, April 4, 2025

6:30 p.m. | at the farm | Gridley, Illinois | Or watch Live on CCI.Live

PRAIRIE VIEW FARMS Fifteenth Annual SPRING PRODUCTION SALE

Friday Night, April 4, 2025

6:30 p.m. | at the farm | Gridley, Illinois

Or watch Live on CCI.Live

This year marks our 15th Spring Production Sale. Looking back on the photos we've taken over the years during our sales, it has warmed our heart to see the support from our Angus family, our friends and biological family who have helped us prepare and host this event year after year, and how our kids have grown up with this annual event.

Much has changed in the last 15 years at PVF, but we think one thing stays the same – our purpose to provide high quality Angus genetics to our breed that will make a difference to the breed. We are honored to have sold cattle to virtually every state in the U.S. and have seen our genetics not only make a difference in the show ring but as breeding pieces around the breed and beyond our Angus circle, and we hope this offering will help advance that purpose even further. We are excited to feature some of our newest donor cows this sale to show you what we have up our sleeve next.

Please plan to join us Friday night April 4th at the farm in Gridley for our 15th annual PVF Spring Production Sale. Cattle will be out all day, Dinner will be served at 5:30 and the sale will begin at 6:30. As always, we welcome your questions, your visits and your friendships anytime.

- Alan & Theresa

- Brandon & Cathy

ALAN & THERESA MILLER, 217.840.6935

BRANDON & CATHY JONES, 309.370.1081

KYLE CHRISLAW, 608.751.9640 | KURT MEYER, 217.273.1399

ZACH WAMSLEY, 219.869.0057 | pvfangus@gmail.com



SALE DAY DETAILS

AUCTIONEER/ RINGMEN/ CONSULTANTS

Cody Lowderman, 309.833.5543
Shane Ryan, 309.391.7490

Casey Jentz, 608.234.1998
Kent Jaecke, 405.408.2440

SALE DAY PHONES

Alan Miller, 217.840.6935
Theresa Miller, 217.649.1990
Rance Long, 918.510.3464
Kurt Meyer, 217.273.1399

Brandon Jones, 309.370.1081
Cathy Jones, 309.258.1266
Kyle Chrislaw, 608.751.9640
Zach Wamsley, 219.869.0057

HOTEL ACCOMMODATIONS

HOTEL HEADQUARTERS, Hampton Inn Pontiac, IL, 815.844.4400
2000 Grand Prix Drive, Pontiac, IL

DIRECTIONS TO THE SALE ... From Gridley, IL and Route 24 go 2.8 miles north on Center St.
Address: 10788 N 250 East Rd., Gridley, IL 61744

INTERNET COVERAGE ... The sale will be covered live by CCI.Live. Register for a bid number to bid online at www.cci.live or through www.pvfangus.com. If you have questions registering to bid, contact CCI.Live's technical support at 405.900.4505.

SALE MANAGEMENT ...

RANCE LONG, Inc. | 918.510.3464 cell
rlong@rancelong.com | www.rancelong.com



PVF PROUDLY
PARTNERS WITH



HERD HEALTH ... All cattle selling can receive health papers upon request.

TRUCKING ARRANGEMENTS ... We are glad to assist you with trucking arrangements on your purchases at the buyer's expense.

TERMS & CONDITIONS ... Cattle sell under the Terms & Conditions as recommended by the American Angus Association.

EMBRYOS INTEREST ... PVF will be retaining 1/2 embryo interest on heifers - Lots 1, 2, 3, 4, 6, 7, 8, 11, 13, 14, 15, 16, 19, 23, 24, 30 & 31 selling in this offering. Contact Alan for more details.

IDENTIFICATION ... All females selling are registered with the American Angus Association with their primary identification as their EID number, secondary identification as tattoo. Their EID number will appear on their registration paper. In addition, all females have been BVD tested with the American Angus Association and results can be obtained upon request if needed for health requirements for shows.

AIRPORT ... 1 hour and 45 minutes to Chicago Midway (MDW); 30 minutes to Bloomington, Illinois (BMI); & 50 minutes to Peoria, Illinois (PIA). Contact Alan or Theresa for any help with travel arrangements.

SALE FORMAT ... A video will play of each Lot as the sale happens. The heifers and cows will all be available for viewing outside of the sale barn and will not be coming into the sale ring during the auction.

INSURANCE ... Available through James F Bessler Inc., Livestock Mortality Insurance, 815.762.2641.

PHOTOS & VIDEOS current as of March 3, 2025.
EPD VALUES current as of February 28, 2025.



OFFERING IN THIS SALE ...

41 ELITE SUMMER & FALL BORN
ANGUS HEIFER CALVESPAGE 4-31

5 LATE SPRING CALVING
BRED HEIFERSPAGE 33-35

13 HERD SIRE CANDIDATES ..PAGE 37-41

14 EMBRYO LOTSPAGE 42-43

DVE 15 Years





1

PVF BLACKBIRD 4101

[cow +*21196686] [calved: 06.07.2024]



PVF BLACKLIST 7077

PVF BLACKBIRD 2201

	BEPD	WEPD	YEPD	MILK	SC
EPDs	1.6	59	114	25	212

PVF INSIGHT 0129
PVF BLACKBIRD 3070
STAG GOOD TIMES 201 ET
PVF BLACKBIRD 3127

Leading off with an impressive summer born daughter of one of our newest foundation donors PVF Blackbird 2201. 2201 is a Good Times daughter of PVF Blackbird 3127, who is best known as the dam of PVF The Natural 7042. Blacklist has cemented himself as one of the elite show ring sires and only two years ago produced the Grand Owned and Bred and Owned Heifers at the National Junior Angus Show. This lead off June born heifer has the style, mass and structural integrity to be a force to be reckoned with.

Retaining 1/2 embryo interest in Lot 1.



PVF Blacklist 7077, this ST Genetics many time sire of champions is the sire of Lot 1.



PVF Blackbird 3127, a maternal granddam of Lots 1-3.

PVF BLACKBIRD 2201

Cow Family





2 PVF BLACKBIRD 4096

[cow +*21190779] [calved: 05.06.2024]



PVF MARVEL 9185

PVF BLACKBIRD 2201

	BEPD	WEPD	YEPD	MILK	SC
EPDs	4.6	67	120	17	195

PVF BLACKLIST 7077

PVF MISSIE 5245

STAG GOOD TIMES 201 ET

PVF BLACKBIRD 3127

Stacking some of the most elite females to ever reside at PVF into one potent pedigree resulted in our Lot 2 offering. This May born daughter of Marvel combines the best of the Missie and Blackbird cow families. This female has as much show ring style and eye appeal as you could ever hope to produce. 4096 is incredibly stout in her structure while maintaining an unrivaled look through her front end. She has so many unique pieces to build on as a donor when her show career is through.

Retaining 1/2 embryo interest in Lot 2.



PVF Marvel 9185, sire of Lots 2-3.



PVF The Natural 7042, maternal brother to the dam of Lot 2.

PVF BLACKBIRD 2201

Cow Family





3 PVF BLACKBIRD 4129

[cow +21193705] [calved: 09.07.2024]



PVF MARVEL 9185
PVF BLACKBIRD 2201

	BEPD	WEPD	YEPD	MILK	SC
EPDs	2.4	61	109	24	195
	PVF BLACKLIST 7077				
	PVF MISSIE 5245				
	STAG GOOD TIMES 201 ET				
	PVF BLACKBIRD 3127				

This ultra stout September daughter of Marvel traces to the legendary Blackbird 645 on the bottom and Missie 0084 on the top. The Blackbird cow family stamps as much stoutness and power than anything on the farm, and Lot 3 leads the way in that regard. She combines tremendous muscle shape with a huge foot and power from end to end without sacrificing the elite look through her front end. These first three lots exemplify why we are so excited about the future of the 2201 donor in our program.

Retaining 1/2 embryo interest in Lot 3.



PVF Blackbird 2201, this Third Overall Heifer at the Illinois Junior Angus Field Day for Amelia is the dam of Lots 1-3.



PVF SFA Blackbird 3303, this Reserve Grand Champion Bred & Owned female at the NWSS in 2025 for Ashton Dillow is from the Blackbird cow family.

PVF BLACKBIRD 2201

Cow Family





4 PVF BLACKCAP 4135

[cow +*21193711] [calved: 09.10.2024]



PVF DLX KING PIN 0058

PVF BLACKCAP 9114

	BEPD	WEPD	YEPD	MILK	\$C
EPDs	2.4	56	99	20	236

PVF BLACKLIST 7077

PVF LUCY 4189

PVF INAUGURATION 6174

MC BLACKCAP 3057

The Blackcap cow family was added to the PVF program for her outcross genetics and incredible maternal look. The first eight progeny from 9114 averaged more than \$40,000 in 2024. Lot 4 represents the first of a trio of impressive daughters of the leading donor to come out of the Blackcap tribe. In addition to building what is proving to be one of the next great cow families at PVF, the MC Blackcap family also produced MC Caesar 3109, the 2025 National Western Grand Champion Bull.

Retaining 1/2 embryo interest in Lot 4.



PVF DLX King Pin 0058, the sire of Lot 4.



MC Caesar 3109, Grand Champion Bull, NWSS in 2025 is a maternal brother to the dam of Lot 4.

PVF BLACKCAP 9114

Cow Family





5 PVF BLACKCAP 4150

[cow +21193720] [calved: 09.24.2024]



STAG GOOD TIMES 201 ET

PVF BLACKCAP 9114

	BEPD	WEPD	YEPD	MILK	\$C
EPDs	2.5	55	98	23	199
	SCC SCH 24 KARAT 838				
	SCC SCH PHYLIS 6104				
	PVF INAUGURATION 6174				
	MC BLACKCAP 3057				

Lot 5 represents a full sister to PVF Blackcap 4075, the \$100,000 sale feature of our Fall 24 Production Sale to the Griswold family. Good Times progeny are becoming increasingly dominant in the show ring, and as our first daughters entered production last year, they are proving their worth as producers. Good Times two-year-olds dominated our donor pen last spring, including PVF Blackbird 2201, who produced the first three lots in this sale. 4150 is a massively constructed, huge ribbed maternal looking female who will surely be a favorite sale night.



PVF Blackcap 6313, this Fourth Overall National Junior Show Champion is a maternal sib to the dam of Lots 4-6.



STAG Good Times 201 ET, sire of Lot 5

PVF BLACKCAP 9114

Cow Family





6

PVF BLACKCAP 4088

[cow +*21190775] [calved: 04.22.2024]



PVF BLACKLIST 7077

PVF BLACKCAP 9114

	BEPD	WEPD	YEPD	MILK	SC
EPDs	3.1	54	84	18	194

PVF INSIGHT 0129
PVF BLACKBIRD 3070
PVF INAUGURATION 6174
MC BLACKCAP 3057

A true sale feature in this female whose incredible look is backed by a genetic package sure to make this one a show ring contender and no-miss future donor. Blacklist has sired champions throughout numerous breeds and this heifer's show value may even be surpassed by her producing ability in the future in the Angus breed and beyond. 9114 is a daughter of PVF Inauguration 6174, who has stamped her progeny with everything we could have hoped for and more.

Retaining 1/2 embryo interest in Lot 6.



PVF Blacklist 7077, the sire of Lot 6.



*PVF Inauguration 6174,
maternal grandsire of Lots 4-6.*

PVF BLACKCAP 9114

Cow Family





7 PVF MISSIE 4117

[cow +21193695] [calved: 09.02.2024]



PVF DLX KING PIN 0058

PVF MISSIE 6228

	BEPD	WEPD	YEPD	MILK	\$C
EPDs	2.4	51	88	20	208

PVF BLACKLIST 7077

PVF LUCY 4189

C&C PRIORITY 1428B EXAR

PVF MISSIE 790

The first of four daughters of the legendary PVF Missie 6228 in this offering. Her numerous sale features and high sellers include three full sisters to this heifer who averaged more than \$100,000 in the Spring 2023 PVF Production Sale. This heifer's dam was a past Reserve Grand Champion Angus at the National Western Stock Show, and her daughters include PVF Missie 9214 and PVF Missie 1124, who were both division winners at the National Junior Angus Show.

Retaining 1/2 embryo interest in Lot 7.



PVF Missie 6228, this Reserve Grand Champion at the NWSS for Olivia Caldwell is the dam of Lots 7-10.



PVF Missie 1124, this Illinois Junior Angus Field Day Champion for Ashton Dillow is a maternal sister to Lots 7-10.

PVF MISSIE 6228
Cow Family





8

PVF MISSIE 4144

[cow +21193718] [calved: 09.19.2024]



PVF DLX KING PIN 0058

PVF MISSIE 6228

	BEPD	WEPD	YEPD	MILK	\$C
EPDs	2.4	51	88	20	208

PVF BLACKLIST 7077

PVF LUCY 4189

C&C PRIORITY 1428B EXAR

PVF MISSIE 790

Rapidly becoming one of our most sure-fire matings combining the legendary PVF Missie 6228 with PVF DLX King Pin 0058 produced the \$55,000 featured PVF Missie 4220 from our Fall 24 Production Sale who went on to be a popular Reserve Division Champion at Cattlemen's Congress. In addition to her championship pedigree, Lot 8 is simply one of the most stunning females in the offering. She is fault free in her design, while still being elite in her look, and will absolutely grab everyone's attention in the show ring.

Retaining 1/2 embryo interest in Lot 8.



PVF Missie 3090, Fifth Overall Supreme Female at the Illinois Beef Expo for Chloë Boitnott is a maternal sib to Lots 7-10.



PVF Missie 4220, this popular Reserve Division Champion at the 2025 Cattlemen's Congress for Kasey Meyer is a full sib to Lots 7-8.

PVF MISSIE 6228

Cow Family





9 PVF MISSIE 4151

[cow +21194239] [calved: 09.25.2024]



BNWZ DIGNITY 8017
PVF MISSIE 6228

	BEPD	WEPD	YEPD	MILK	\$C
EPDs	3.3	54	94	21	194

PVF INSIGHT 0129
CCC SARA'S DREAM 5116
C&C PRIORITY 1428B EXAR
PVF MISSIE 790

Mating the many time champion and proven producer PVF Missie 6228 to with one of Insight's most powerful sons, BNWZ Dignity 8017 offers a pedigree line bred to PVF Missie 790, who is the dam of such PVF legends as PVF Insight 0129, PVF Missie 0084 and PVF Missie 1148. This female is built for the long haul. Her impeccable structure, rib shape and femininity will make her competitive this summer and beyond.



BNWZ Dignity 8017, sire of Lot 9.



10 PVF MISSIE 4161

[cow +21201519] [calved: 10.19.2024]



KR CASINO 6243
PVF MISSIE 6228

	BEPD	WEPD	YEPD	MILK	\$C
EPDs	4.1	54	97	26	193

CFCC BLACK JACK 001
MALSONS SAVANNAH 27Y
C&C PRIORITY 1428B EXAR
PVF MISSIE 790

PVF Missie 6228 has produced a division winner at the past five National Junior Angus Shows, and one of the four daughters this offering sure could be the sixth. We conclude the 6228s with one of the most potent cow prospects of the bunch. Casino on the Missie family has added power and ruggedness and produced our featured donor PVF Missie 8246 who has progeny in this catalog. A full sister to Lot 10 was one of those division winners at NJAS, PVF Missie 0122 for Ashlyn Mool who is now a featured donor at Hill Top Farms.



KR Casino 6243, sire of Lot 10.



PVF Missie 3161, this Division Champion at the National Junior Angus Show for Ella Eathington is a maternal sib to Lots 7-10.

PVF MISSIE 6228
Cow Family





11 PVF PROVEN QUEEN 4137

[cow +21193713] [calved: 09.11.2024]



BLC/MLA OMEGA 2258

PVF PROVEN QUEEN 8256

	BEPD	WEPD	YEPD	MILK	\$C
EPDs	4.6	68	111	16	198

COLLISON ALPHA 028
MLA PROVEN QUEEN 2058
PVF INSIGHT 0129
PVF PROVEN QUEEN 5250

Combining the power of the Proven Queen cow family with the show stopping presence of the Omega sire, Lot 11 is sure to carry on the lineage of her family. BLC/MLA Omega 2258 was the extremely popular \$190,000 valued live lot from the 2023 Embryos on Snow Sale. She is bred top and bottom to our Proven Queen cow family, and such program legends as Proven Queen 615, 010 and 602 can be found on both sides of her pedigree. 4137 exhibits the incredible look and presence that we expected from Omega with the raw power demonstrated by the Proven Queens. Retaining 1/2 embryo interest in Lot 11.



PVF Proven Queen 4212, this popular Lot 1 in our Fall Production Sale is a maternal sib to Lots 11-14



BLC/MLA Omega 2258, sire of Lot 11.

PVF PROVEN QUEEN 8256

Cow Family





12 PVF PROVEN QUEEN 4118

[cow 21193696] [calved: 09.02.2024]



PVF BLACKLIST 7077

PVF PROVEN QUEEN 8256

	BEPD	WEPD	YEPD	MILK	SC
EPDs	4.7	70	116	17	241

PVF INSIGHT 0129

PVF BLACKBIRD 3070

PVF INSIGHT 0129

PVF PROVEN QUEEN 5250

This heifer's dam, PVF Proven Queen 8256, produced Lots 1-6 in our Fall PVF Production Sale that averaged \$64,000. 8256 herself was shown successfully by Cameron Choate, including the Reserve Grand Champion of the North American International Livestock Exhibition, and was a division winner at the National Junior Angus Show. This female is a line bred Insight from the Proven Queen cow family and offers unmatched stoutness and power coupled with a show ring style that racked up numerous banners. 8256, as well as her four Proven Queen dams across the bottom of her pedigree were all National Junior Angus Show division winners.



PVF Proven Queen 8256, this North American International Livestock Exhibition Reserve Champion Female is the dam of Lots 11-14.

PVF PROVEN QUEEN 8256

Cow Family





13



14



13 PVF PROVEN QUEEN 4162

[cow +21193722] [calved: 10.22.2024]

	BEPD	WEPD	YEPD	MILK	\$C
EPDs	3.5	62	106	19	199

14 PVF PROVEN QUEEN 4163

[cow +21193723] [calved: 11.03.2024]

	BEPD	WEPD	YEPD	MILK	\$C
EPDs	3.5	62	106	19	199

STAG GOOD TIMES 201 ET
PVF PROVEN QUEEN 8256

SCC SCH 24 KARAT 838
SCC SCH PHYLLIS 6104
PVF INSIGHT 0129
PVF PROVEN QUEEN 5250

Two full sibs to one of the most popular matings in recent PVF history. Mating the show ring style and success of Good Times with the proven power of the Proven Queen cow family, this mating resulted in PVF Proven Queen 3034, Supreme at the California Youth Expo for Cambria Cook, as well as PVF Proven Queen 4212, the \$170,000 featured Lot 1 female of that Fall Production Sale.

Retaining 1/2 embryo interest in Lots 13 & 14.



PVF Proven Queen 3034, the Supreme Champion of the California Youth Expo for Cambria Cook is a full sib to Lots 13-14.

PVF PROVEN QUEEN 8256

Cow Family





15 PVF LUCY 4141

[cow +21203812] [calved: 09.14.2024]



STAG GOOD TIMES 201 ET

PVF LUCY 1056

	BEPD	WEPD	YEPD	MILK	SC
EPDs	3.3	58	104	23	190
	SCC SCH 24 KARAT 838				
	SCC SCH PHYLLIS 6104				
	PVF MARVEL 9185				
	WB PVF LUCY 1052				

Lots 15 and 16 represent the first progeny to sell from the many time Texas Major Champion PVF Lucy 1056. 1056 was a feature of a past PVF Production Sale that went on to be the Supreme Champion Female at Houston, Austin, and twice at San Antonio for Braxton Cole. 1056's famous dam, WB PVF Lucy 1052 was a many time champion for the Ward family including Reserve Grand Heifer at the National Western Stock Show. Retaining 1/2 embryo interest in Lot 15.



PVF Lucy 1056, this two-time San Antonio Stock Show Supreme Champion for Braxton Cole is the dam of Lots 15-16.



PVF Lucy 1056, this two-time San Antonio Stock Show Supreme Champion for Braxton Cole is the dam of Lots 15-16.

PVF LUCY 1056

Cow Family





16 PVF LUCY 4148

[cow +21203818] [calved: 09.22.2024]



STAG GOOD TIMES 201 ET

PVF LUCY 1056

	BEPD	WEPD	YEPD	MILK	SC
EPDs	3.3	58	104	23	190
SCC SCH 24 KARAT	838				
SCC SCH PHYLLIS	6104				
PVF MARVEL	9185				
WB PVF LUCY	1052				

Unique in more ways than one, this birthmarked heifer has been an eye catcher from the day she was born. While we always intended to keep her as a donor, we simply decided that she is too exceptional to not offer the opportunity to be our partner to exhibit her. Rarely do we make one this stout from end to end, exquisite in her neck and fault free in her structure. This birthmark is within eligibility requirements for exhibition at Angus shows. Retaining 1/2 embryo interest in Lot 16.



PVF Lucy 1056, this Supreme Champion at the Houston Livestock Show for Braxton Cole is the dam of Lots 15-16.



PVF Lucy 1056, this Supreme Champion at Rodeo Austin for Braxton Cole is the dam of Lots 15-16

PVF LUCY 1056
Cow Family





17



18



17 PVF LUCY 4130

[cow +21193706] [calved: 09.08.2024]

	BEPD	WEPD	YEPD	MILK	\$C
EPDs	3.7	62	107	28	225

18 PVF LUCY 4139

[cow +21193715] [calved: 09.12.2024]

	BEPD	WEPD	YEPD	MILK	\$C
EPDs	3.7	62	107	28	225

{ PVF MARVEL 9185
WB PVF LUCY 1052

PVF BLACKLIST 7077
PVF MISSIE 5245
PVF WINDFALL SCC 9005
THOMAS LUCY 7360

Lots 17 and 18 represent full sisters to PVF Lucy 1056, donor dam of Lots 15 and 16 in this sale and one of the winningest heifers in memory for Braxton Cole of Texas. The Lucy cow family has not only produced champions at nearly every major show but a maternal sister to WB PVF Lucy 1052 also produced PVF DLX King Pin 0058, one of the most popular young sires in the Angus breed.



PVF Marvel 9185, this Select Sires sensation is the sire of Lots 17-18.



PVF Lucy 4189, the dam of King Pin is a maternal sister to the dam of Lots 17-18.

WB PVF LUCY 1052
Cow Family





19 PVF MISSIE 4128

[cow +21193704] [calved: 09.07.2024]



STAG GOOD TIMES 201 ET
PVF MISSIE 4149

	BEPD	WEPD	YEPD	MILK	SC
EPDs	2.9	50	88	20	181
	SCC SCH 24 KARAT 838				
	SCC SCH PHYLLIS 6104				
	C&C PRIORITY 1428B EXAR				
	PVF MISSIE 0084				

A sure to be popular September heifer, who combines the incredibly sought after STAG Good Times 201 with a past National Junior Angus Show Champion Female, PVF Missie 4149. This female has been a stand-out since she was born for her mass and overall dimension and combines the look we expect, with even more power that we traditionally see from this mating.

Retaining 1/2 embryo interest in Lot 19.



20 PVF MISSIE 4100

[cow +*21190783] [calved: 06.04.2024]



PVF MARVEL 9185
PVF MISSIE 4149

	BEPD	WEPD	YEPD	MILK	SC
EPDs	3.4	56	100	16	241
	PVF BLACKLIST 7077				
	PVF MISSIE 5245				
	C&C PRIORITY 1428B EXAR				
	PVF MISSIE 0084				

This top June heifer is a full sister to PVF Missie 1055, a \$130,000 sale topper who went on to be named Junior Champion of the North American International Livestock Exhibition for Ashton Dillow. Progeny of Select Sires' PVF Marvel 9185 are show ring standouts for their ability to tie together extra power bone and foot size with a striking design.



PVF Missie 1055, this North American International Livestock Exhibition Division Winner for Ashton Dillow is a full sib to Lot 20.



PVF Missie 4149, the National Junior Angus Show Grand Champion Female for Esther McCabe is the dam of Lots 19-20.

PVF MISSIE 4149
Cow Family





21 PVF PROVEN QUEEN 4154

[cow +21194215] [calved: 09.28.2024]



BNWZ DIGNITY 8017

PVF PROVEN QUEEN 1033

	BEPD	WEPD	YEPD	MILK	\$C
EPDs	3.1	63	112	21	206

PVF INSIGHT 0129

CCC SARA'S DREAM 5116

PVF MARVEL 9185

PVF PROVEN QUEEN 5186

Featuring the first three progeny from a young donor we are truly excited about. PVF Proven Queen 1033 is a Marvel daughter from the famous PVF Proven Queen 5186, who is a many time champion for Amelia and these first three daughters are sure to put her on the map. This uniquely designed Dignity daughter is extreme through her front-end structure, super stout in her bone work, and exhibits the same unique look that made her dam so popular in the show ring.



22 PVF PROVEN QUEEN 4158

[cow +21196725] [calved: 10.11.2024]



KR CASINO 6243

PVF PROVEN QUEEN 1033

	BEPD	WEPD	YEPD	MILK	\$C
EPDs	3.9	63	115	26	203

CFCC BLACK JACK 001

MALSONS SAVANNAH 27Y

PVF MARVEL 9185

PVF PROVEN QUEEN 5186

What is sure to be a feature sale night, this October born daughter out of Casino shows all the depth and power and rib shape that we hope to get from a Casino sired female, with the eye-catching look of her mom. Casino crossed on this Marvel daughter from the Proven Queen cow family has created an incredibly powerful show and donor prospect.



PVF Proven Queen 3025, the Fourth Overall Heifer at National Junior Angus Show is a full sister to the dam of Lots 21-23.

PVF PROVEN QUEEN 1033

Cow Family





23 PVF PROVEN QUEEN 4143

[cow +21193717] [calved: 09.18.2024]



PVF DLX KING PIN 0058

PVF PROVEN QUEEN 1033

	BEPD	WEPD	YEPD	MILK	\$C
EPDs	2.2	59	106	20	219

PVF BLACKLIST 7077

PVF LUCY 4189

PVF MARVEL 9185

PVF PROVEN QUEEN 5186

One of the most elite females in this offering, Lot 23 exhibits a wild look through her front end with thickness and depth from a female line bred to Blacklist. Her donor dam is a daughter of PVF Proven Queen 5186, who produced the Fourth Overall Owned Female at the National Junior Angus Show and the Supreme Female at the Dixie National Junior Angus Show this year. Combining Blackbird, Missie, Lucy and Proven Queen cow families, all the PVF legends are wrapped up in this female.

Retaining 1/2 embryo interest in Lot 23.



PVF Proven Queen 1033, this popular National Western Stock Show Division winner for Amelia is the dam of Lot 21-23



PVF Proven Queen 1033, this Top 5 Bred and Owned Female at the Atlantic National for Amelia is the dam of Lots 21-23

PVF PROVEN QUEEN 1033

Cow Family





24 PVF BLACKBIRD 4126

[cow 21193703] [calved: 09.06.2024]



PVF DLX KING PIN 0058
PVF BLACKBIRD 8197

	BEPD	WEPD	YEPD	MILK	\$C
EPDs	1.9	57	99	22	217

PVF BLACKLIST 7077
PVF LUCY 4189
PVF INSIGHT 0129
PVF BLACKBIRD 3127

The dam of Lot 24, PVF Blackbird 8197 is a full sister to PVF The Natural 7042, the featured ABS/Griswold/Webster sire. She produced PVF Blackbird 3152 whose many accomplishments this summer were highlighted by the Fourth Overall Bred and Owned Female at the National Junior Angus Show, Grand Champion Bred and Owned at the Eastern Regional Angus Show and Third Overall Bred and Owned Female at the Atlantic National Angus Show.

Retaining 1/2 embryo interest in Lot 24.



PVF Blackbird 3152, Fourth Overall Bred & Owned Champion Heifer for Adam at the 2024 National Junior Angus Show is a maternal sib to Lot 24.



PVF Blackbird 3152, this Grand Champion Bred & Owned Female from the Eastern Regional Junior Angus Show is a maternal sib to Lot 24.

PVF BLACKBIRD 8197

Cow Family





25 PVF PROVEN QUEEN 4087

[cow +*21190774] [calved: 04.21.2024]



BLC/MLA OMEGA 2258
PVF PROVEN QUEEN 9119

	BEPD	WEPD	YEPD	MILK	SC
EPDs	4.5	60	115	17	147
	COLLISON ALPHA 028				
	MLA PROVEN QUEEN 2058				
	PVF BLACKLIST 7077				
	PVF PROVEN QUEEN 2106				

Tracing to the Proven Queen cow family, this April born daughter of Omega combines the outstanding show ring style and presence her sire stamps with the power and cow look of her royal mother. PVF Proven Queen 9119 was a many time champion including Grand Champion Bred and Owned at the Eastern Regional Junior Angus Show and she is carrying on the next generation of the Proven Queen cow family in our donor battery.



PVF Proven Queen 9119, this Eastern Regional Junior Angus Show Grand Champion Bred & Owned Heifer for Amelia is the dam of Lot 25.



PVF Proven Queen 2106, the famous foundation Proven Queen donor is the granddam of Lot 25.

PVF PROVEN QUEEN 9119

Cow Family





26 PVF MISSIE 4081

[cow +*21190771] [calved: 04.15.2024]

	BEPD	WEPD	YEPD	MILK	SC
EPDs	5.8	68	107	19	185



SELDOM REST SANDMAN 6075
PVF MISSIE 8246

EXAR CLASSEN 1422B
SILVEIRAS S SIS SANDY 2354
KR CASINO 6243
PVF MISSIE 4149

Combining two of the winningest show ring families, the Sandy's and the Missie's into one pedigree, has created this April female with an outstanding show ring look, rib shape and body dimension to be a tremendous cow. 8246 consistently transmits extra ruggedness due to her sire, KR Casino 6243, and is a proven producer of show ring champions. In the past year alone, she produced PVF SFA Missie 3067, Reserve Grand Female at the Atlantic National and PVF SFA Missie 3071, Grand Champion Female of the Illinois Junior Angus Field Day.



PVF SFA Missie 3071, this Supreme Champion Animal at the Illinois Junior Angus Field Day is a maternal sib to Lot 26.



PVF SFA Missie 3067, this Reserve Champion Atlantic National ROV Female for Ashton Dillow is a maternal sib to Lot 26.

PVF MISSIE 8246

Cow Family





27 PVF PROVEN QUEEN 4099

[cow +*21190781] [calved: 05.28.2024]



PVF MARVEL 9185
PVF PROVEN QUEEN 5186

	BEPD	WEPD	YEPD	MILK	\$C
EPDs	3.5	57	100	21	192
	PVF BLACKLIST 7077				
	PVF MISSIE 5245				
	PVF RADIANCE 0126				
	PVF PROVEN QUEEN 2106				

Highlighting a full sister to the 2024 National Junior Angus Show 4th Overall Female, this late May offering is a full sister to the \$100,000 PVF Proven Queen 3025. She topped our Fall 23 Production Sale and went on to be a many time champion for Ashton Dillow. Among this donor dam's many other accomplishments, PVF Proven Queen 3126 was named Supreme Champion Female of the 2025 Dixie National Junior Angus Show for the Saucier family. Additionally, 5186 produced the newest exciting young Proven Queen in our lineup, PVF Proven Queen 1033, whose offspring are featured as Lots 21-23 in this catalog.



PVF Proven Queen 3025, this Fourth Overall Owned Heifer for Ashton Dillow is a full sib to Lot 27.



PVF Proven Queen 3126, this Supreme Champion at the Dixie National Junior Show for Brooks Saucier is a maternal sib to Lot 27.

PVF PROVEN QUEEN 5186

Cow Family





28



29



28 PVF PROVEN QUEEN 4103

[cow +21196187] [calved: 07.26.2024]

	BEPD	WEPD	YEPD	MILK	\$C
EPDs	2.5	50	92	20	205

29 PVF PROVEN QUEEN 4105

[cow +21196188] [calved: 08.02.2024]

	BEPD	WEPD	YEPD	MILK	\$C
EPDs	2.5	50	92	20	205

PVF DLX KING PIN 0058

PVF PROVEN QUEEN 5094

PVF BLACKLIST 7077

PVF LUCY 4189

PVF INSIGHT 0129

DAMERON PVF PROVEN QUEEN010

Offering two late summer full sisters by the ever increasingly popular ABS Sire, PVF DLX King Pin 0058, whose progeny continue to rack up banners across multiple breeds, increasing his industry impact every day. The donor dam of these females, PVF Proven Queen 5094, who is sired by our foundation Genex sire, PVF Insight 0129 is a direct daughter of the famous PVF donor, Dameron PVF Proven Queen 010. Among 5094's many accomplishments include a past \$40,000 feature of a past Spring Production Sale.



This ABS sire PVF DLX King Pin 0058 is the sire of Lots 28-29.

PVF PROVEN QUEEN 5094

Cow Family





30



31



30

PVF BLACKBIRD 4159

[cow +21201525] [calved: 10.16.2024]

	BEPD	WEPD	YEPD	MILK	\$C
EPDs	3.6	62	105	20	207

31

PVF BLACKBIRD 4164

[cow +21201526] [calved: 11.06.2024]

	BEPD	WEPD	YEPD	MILK	\$C
EPDs	3.6	62	105	20	207

BNWZ DIGNITY 8017

PVF BLACKBIRD 3070

PVF INSIGHT 0129
CCC SARA'S DREAM 5116
DAMERON FIRST CLASS
ALL PVF BLACKBIRD 645

Most famous as the dam of Blacklist, PVF Blackbird 3070 is a direct daughter of our Blackbird 645 foundation donor, whose many accomplishments including producing the Grand Champion heifers at the National Junior Angus Show, the North American International Livestock Exhibition, the National Western Stock Show, and the Fort Worth Stock Show. In addition to her famous siblings and son, 3070 has produced many champion females including PVF Blackbird 0253, the fifth overall Supreme Female at the Indiana State Fair for Rachel Streitmatter. These two late fall daughters of one of Insight's greatest sons represent outstanding show and genetic building blocks.

Retaining 1/2 embryo interest in Lots 30 & 31.



PVF Blacklist 7077, this ST Genetics herd sire is a maternal sib to Lots 30-31.

PVF BLACKBIRD 3070

Cow Family





32



STAG Good Times 201 ET, sire of Lot 32.



33



PVF Blacklist 7077, sire of Lot 33.



32 PVF SOPHIE 4602

[cow 21197608] [calved: 10.04.2024]

{ STAG GOOD TIMES 201 ET
HIRSCHFELD SOPHIE 229

	BEPD	WEPD	YEPD	MILK	SC
SIRE	2.7	57	94	22	206
DAM	1.9	53	96	59	163
SCC SCH 24 KARAT 838					
SCC SCH PHYLLIS 6104					
DAMERON FIRST CLASS					
PVF SOPHIE 2048					

Offering an exciting combination of a female that exhibits the look that Good Times stamps with the powerful productive cow power of the Sophie cow family, this October born female offers the pedigree to be an elite producer once her show ring career is past. While Good Times needs no introduction, our Sophie cow family has historically been one of most problem-free bull and female producers.

33 PVF MISSIE 4155

[cow 21193721] [calved: 09.28.2024]

{ PVF BLACKLIST 7077
PVF MISSIE 1119

	BEPD	WEPD	YEPD	MILK	SC
EPDs	3.9	68	111	18	191
PVF INSIGHT 0129					
PVF BLACKBIRD 3070					
CONLEY NO LIMIT					
PVF MISSIE 6213					

Certainly, one to keep an eye on Sale Night, this Blacklist daughter from the Missie cow family has all the pieces to be a front-end show heifer and front pasture cow. Her young dam by Conley No Limit is proving to be a powerful producer, and tracing back to the famous PVF Missie 790, who established herself as the foundation of our entire Missie family, this late September prospect will be hard to miss.

PVF OPEN HEIFERS



34



PVF Missie 6298, dam of Lot 34.



PVF Missie 0227, dam of Lot 35.

35



34 PVF MISSIE 4104

[cow +21196189] [calved: 07.27.2024]

	BEPD	WEPD	YEPD	MILK	\$C
EPDs	3.7	58	100	21	226

{ PVF MARVEL 9185
PVF MISSIE 6298

PVF BLACKLIST 7077
PVF MISSIE 5245
C&C PRIORITY 1428B EXAR
PVF MISSIE 0084

This late July prospect from PVF Missie 6298 who was a past PVF sale feature and is a full sister to the famous PVF Missie 4149. A maternal sister to this female was a past North American International Livestock Exposition division champion for Rachel Streitmatter. This mating combines the power and stoutness that Marvel transmits with the feminine maternal look of the Missie cow family.

35 PVF MISSIE 4133

[cow +21193709] [calved: 09.09.2024]

	BEPD	WEPD	YEPD	MILK	\$C
EPDs	3.4	58	99	23	240

{ PVF BLACKLIST 7077
PVF MISSIE 0227

PVF INSIGHT 0129
PVF BLACKBIRD 3070
C&C PRIORITY 1428B EXAR
PVF MISSIE 0084

The dam of this heifer was a \$95,000 featured high seller in our first PVF Fall Production Sale, and is a full sister to PVF Missie 4149, whose offspring and embryos continue to top our sales. 0227's first four embryo progeny have been features of our last two sales, averaging more than \$45,000. With this start we are expecting she will cement her place among the Missie legacy of champion producers. Adding the power of Marvel to this Missie donor has created a top end prospect in Lot 35.

PVF OPEN HEIFERS



36 PVF PRINCESS 4121

[cow 21193698] [calved: 09.04.2024]



PVF DLX KING PIN 0058
PVF PRINCESS 2107

	BEPD	WEPD	YEPD	MILK	\$C
EPDs	1.2	56	98	24	210
PVF BLACKLIST 7077					
PVF LUCY 4189					
STAG GOOD TIMES 201 ET					
EXAR PRINCESS 8063					

We always get asked what the sleepers will be, and Lot 36 is a leading candidate to that answer. Raised by a first calf heifer, from the Princess cow family, she is a leading example of what our Good Times two-year-olds are producing when mated back to the Blacklist sire line. The dam of this female is a granddaughter of the Denver Champion, Green's Princess 1012 and a maternal sister to the Denver Champion, T/R NFF Princess E307.



37 PVF MISSIE 4122

[cow 21193699] [calved: 09.04.2024]



PVF DLX KING PIN 0058
PVF MISSIE 2114

	BEPD	WEPD	YEPD	MILK	\$C
EPDs	2.3	61	102	21	205
PVF BLACKLIST 7077					
PVF LUCY 4189					
STAG GOOD TIMES 201 ET					
AF ANDERSON'S MISSIE 914					

The success of mating King Pin with our Good Times two-year-olds produced Lot 37. This heifer traces to the Missie cow family, as her Grand Dam is the legendary PVF Missie 0084, who produced more champions than any donor in the history of PVF. This September prospect is huge middled and extra stout.



38 PVF PROVEN QUEEN 4131

[cow 21193707] [calved: 09.08.2024]



PVF DLX KING PIN 0058
PVF PROVEN QUEEN 2097

	BEPD	WEPD	YEPD	MILK	\$C
EPDs	2.5	57	100	20	199
PVF BLACKLIST 7077					
PVF LUCY 4189					
STAG GOOD TIMES 201 ET					
PVF PROVEN QUEEN 6150					

This super attractive September prospect knocks it out of the park. Sound in her structure and attractive in her build, Lot 38 will be a valuable project for a young exhibitor. Her dam, from the Proven Queen cow family is the direct daughter of PVF Proven Queen 6150, past North American International Livestock Exhibition Division Champion for the Gerken family and is a granddaughter of the foundation of the Proven Queen cow family, the legendary 602.

PVF OPEN HEIFERS

39 PVF BLACKBIRD 4115

[cow 21193693] [calved: 09.01.2024]



+PVF MARVEL 9185
PVF BLACKBIRD 4098

	BEPD	WEPD	YEPD	MILK	SC
EPDs	3.1	64	111	25	218
	PVF BLACKLIST 7077				
	PVF MISSIE 5245				
	SAV BRILLIANCE 8077				
	PVF BLACKBIRD 201				

Digging into the PVF archives, the dam of Lot 39 is a maternal sister to the foundation Genex sire, PVF ALL Payday 729. He led the way in adding more power and muscle shape than any bull we have ever used. When mated to Marvel, this heifer got extra size, performance and power.



40 PVF MISSIE 4120

[cow 21193697] [calved: 09.03.2024]



PVF BLACKLIST 7077
PVF MISSIE 1243

	BEPD	WEPD	YEPD	MILK	SC
EPDs	3.2	65	107	18	211
	PVF INSIGHT 0129				
	PVF BLACKBIRD 3070				
	GATEWAY FOLLOW ME F163				
	PVF MISSIE 6228				

The dam of Lot 40 is a direct daughter of PVF Missie 6228, making her a maternal sister to more PVF champions and sale toppers than we can name in one footnote. Sired by Blacklist, whose ability to consistently produce popular champions in the show ring, makes this late entry to the catalog one to be sure to check out.



41 PVF BLACKBIRD 4124

[cow 21193701] [calved: 09.05.2024]



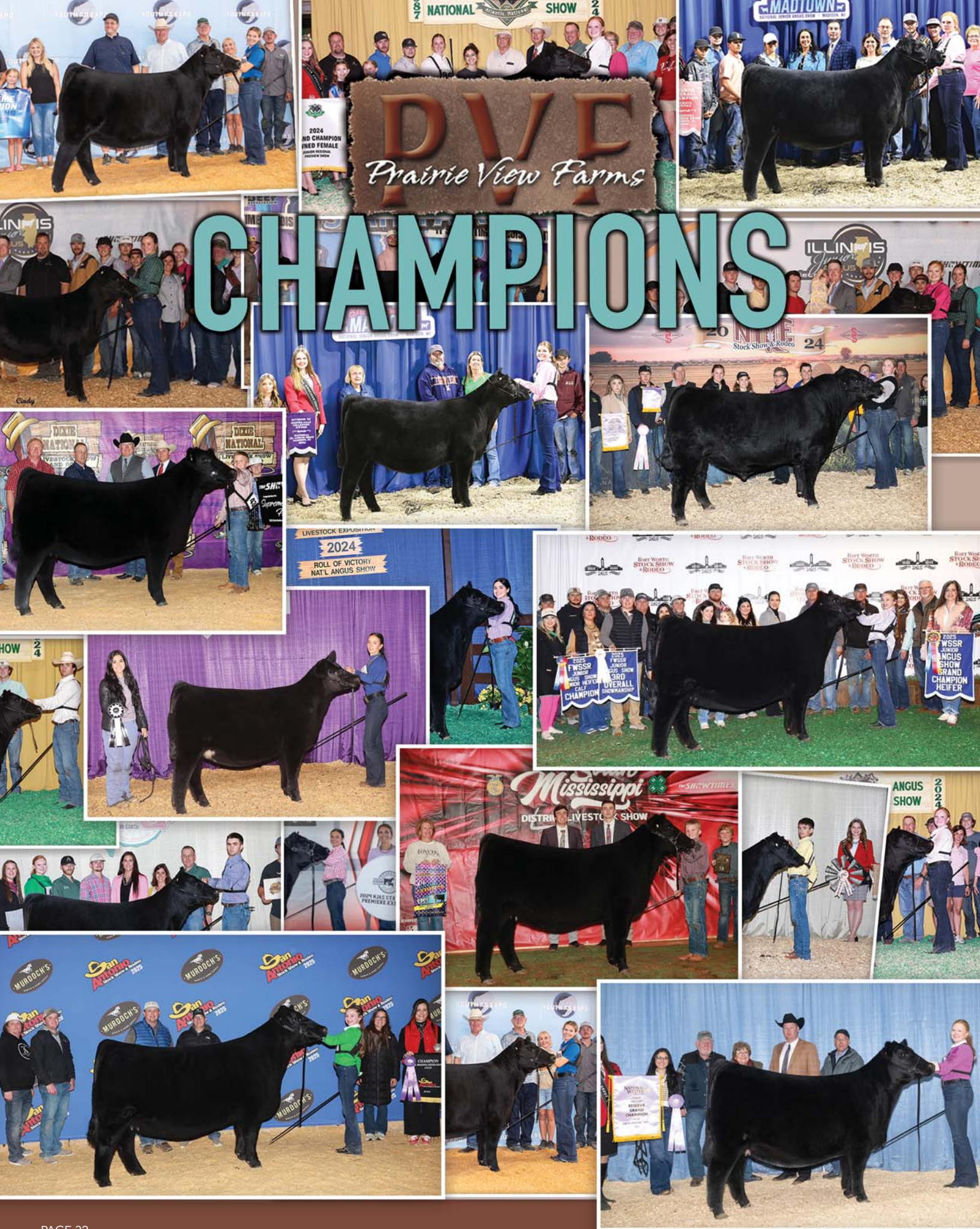
PVF DLX KING PIN 0058
TDFC TOPLINE BLACKBIRD 4043

	BEPD	WEPD	YEPD	MILK	SC
EPDs	2.3	53	92	23	201
	PVF BLACKLIST 7077				
	PVF LUCY 4189				
	DAMERON PVF RAPTOR 702				
	NELSONS BLACKBIRD 2118				

Concluding the show heifer portion of the sale with a beautifully patterned prospect whose dam is a daughter of the legendary Raptor. Raptor made his mark as a foundation sire in our program generations ago. This history, combined with the popular new sire King Pin, is a great way to finish our sale.



PVF OPEN HEIFERS





PVF Missie 6228, dam of Lot 42.

42 PVF MISSIE 3010

[cow -20727587] [calved: 01.26.2023]



PVF DLX KING PIN 0058
PVF MISSIE 6228

	BEPD	WEPD	YEPD	MILK	\$C
EPDs	1.4	62	104	35	258
	PVF BLACKLIST 7077				
	PVF LUCY 4189				
	C&C PRIORITY 1428B EXAR				
	PVF MISSIE 790				

Bred to Calve 04.22.2025 to Connealy Guthrie.

Starting the bred heifer portion of the offering with a full sister to the featured Lots 10-11 in the heifer calf portion of this sale, Matching King Pin with the past National Western Stock Show Champion 6228 is rapidly becoming one of the most consistent matings that we have done at PVF. With 6228's untimely passing this fall, this heifer represents one of the last opportunities to add a young prospect ready to head to the donor pen this summer.

REFERENCE SIREs



CONNELLY GUTHRIE

[bull - *20726777] [calved: 02.12.2023]

	CED	BEPD	WEPD	YEPD	MILK	\$C
EPDs	10	-0.7	66	131	37	302

WOODHILL COMSTOCK
NORA OF CONANGA 895 S

SPRING COVE RENO 4021
CHERNE EVERGREEN D501-F348
CONNELLY NIOBRARA 5451
NAOMI OF CONANGA 4119



PVF CAPONE 2104

[bull - 20567999] [calved: 08.22.2022]

	CED	BEPD	WEPD	YEPD	MILK	\$C
EPDs	15	-0.2	58	105	28	254

PVF DLX KING PIN 0058
PVF MISSIE 5245

PVF BLACKLIST 7077
PVF LUCY 4189
C&C MCKINLEY 3000 EXAR
PVF MISSIE 0084

PVF BRED HEIFERS



PVF Marvel 9185, a full sib to Lot 43.



43



PVF Blackbird 8001, dam of Lot 44.



44



43 PVF MISSIE 3084

[cow +*20731439] [calved: 04.02.2023]

	BEPD	WEPD	YEPD	MILK	\$C
EPDs	1.9	67	120	25	247

{ PVF BLACKLIST 7077
PVF MISSIE 5245

PVF INSIGHT 0129
PVF BLACKBIRD 3070
C&C MCKINLEY 3000 EXAR
PVF MISSIE 0084

Bred to calve 05.10.2025 to Connealy Guthrie.

Headlining the best set of bred heifers that we have ever offered for sale, this full sister to the Select Sires' Standout, PVF Marvel 9185, will be a sale highlight. Not only does Lot 43 offer an exceptional phenotype, but her genotype profile also ranks among the best we have produced.

44 PVF SFA BLACKBIRD 3308

[cow +*20731457] [calved: 02.03.2023]

	BEPD	WEPD	YEPD	MILK	\$C
EPDs	0.9	67	115	22	178

{ PVF MARVEL 9185
PVF BLACKBIRD 8001

PVF BLACKLIST 7077
PVF MISSIE 5245
PVF INSIGHT 0129
PVF BLACKBIRD 3127

Bred to calve 05.03.2025 to PVF Capone 2104.

Possibly the most physically impressive of this powerful set of bred females, Lot 44 is a Marvel daughter whose dam is a full sister to PVF The Natural 7042. A maternal sister to this female, PVF SFA Blackbird 3303 was recently named Junior Champion at the North American International Livestock Exposition and Reserve Junior Champion at the National Western Stock Show.

PVF BRED HEIFERS



45



PVF Blackbird 3070, dam of Lot 45



Connealy Common Ground, sire of Lot 46.

46



45 PVF BLACKBIRD 3055

[cow +20725069] [calved: 03.15.2023]

EPDs	BEPD	WEPD	YEPD	MILK	\$C
4.7	73	119	25	191	

- PVF MARVEL 9185
- PVF BLACKBIRD 3070

PVF BLACKLIST 7077
PVF MISSIE 5245
DAMERON FIRST CLASS
ALL PVF BLACKBIRD 645

Bred to calve 05.15.2025 to PVF King Pin 3111.

This maternal sister to Blacklist adds another highlight to this bred heifer offering. Powerful in her structure and feminine in her look, this young female, line bred to the Blackbird cow family, offers a world of potential.

46 PVF MISSIE 3024

[cow +20727589] [calved: 02.07.2023]

EPDs	BEPD	WEPD	YEPD	MILK	\$C
1.7	63	114	36	277	

- CONNELLY COMMON GROUND
- PVF MISSIE 1223

KCF BENNETT HOMESTEAD
JAYZEE OF CONANGA 85P
PVF BLACKLIST 7077
PVF MISSIE 7161

Bred to calve 05.15.2025 to PVF King Pin 3111.

Concluding the Bred Heifer portion of the sale with a Common Ground daughter that traces back to the Missie cow family. Combining the elite EPD profile of Connealy Common Ground with the unmatched phenotype of the Missies' resulted in a building block bred heifer that is beautifully constructed in person and on paper.

PVF BRED HEIFERS



Dameron
P/F Raptor 702



P/F All
Payday 729

P/F New
Horizon
007



P/F Windfall
SCC 9005



P/F Insight 0129



P/F
Surveillance
4129



P/F Inauguration
6174



P/F TCF
Frozen 6078



P/F The Natural 7042



P/F
Blacklist
7077



P/F Marvel 9185



P/F Capone
2104



P/F DDX
King Pin 0058



P/F Bulletproof 2057



PVF
Bulls



47



*PVF DLX King Pin 0058,
maternal brother to Lot 47.*



PVF Bulletproof, sire of Lot 48.

48



47 PVF FLASH 4304

[bull *21019541] [calved: 01.30.2024]

	BEPD	WEPD	YEPD	MILK	\$C
EPDs	3.6	67	119	18	236

{ PVF MARVEL 9185
PVF LUCY 4189

PVF BLACKLIST 7077
PVF MISSIE 5245
C&C PRIORITY 1428B EXAR
THOMAS LUCY 7360

48 PVF BULLETPROOF 4037

[bull *21019365] [calved: 02.22.2024]

	BEPD	WEPD	YEPD	MILK	\$C
EPDs	0.9	66	112	28	211

{ PVF BULLETPROOF 2051
PVF BLACKBIRD 2201

SCHIEFELBEIN WARRANTY 797
PVF MISSIE 0048
STAG GOOD TIMES 201 ET
PVF BLACKBIRD 3127

Leading off the bulls with an elite herd bull prospect who is a maternal brother to the ABS sire PVF DLX King Pin 0058. Sired by Select Sire's PVF Marvel 9185, 4304 is a power bull with extra growth and performance, combined with modest birth weights. He was a feature of our National Western Stock Show Pen of Bulls this year, who grabbed everyone's attention for his mass and dense construction.

A calving ease sale feature that was the natural calf of the donor dam featured in Lots 1-3 in this catalog. His sire, PVF Bulletproof 2051, is one of our newest calving ease features whose progeny consistently offer that look and structural correctness while maintaining muscle shape. Lot 48 combines the overall style and balance to produce show cattle with sure fire calving ease to make him heifer safe. He will spark interest on sale night

PVF BULLS



49



PVF High Times 3014, Reserve Champion Bull at the Northern International Livestock Exposition for Caitlyn Poser is a maternal brother to Lot 49.



50



PVF DLX King Pin 0058, sire of Lot 50.



49 PVF CHIEFTON 4027

[bull *21026522] [calved: 02.12.2024]

	BEPD	WEPD	YEPD	MILK	\$C
EPDs	1.6	73	121	32	219

{ LT CHIEFTON 1440
PVF PROVEN QUEEN 5180

KOUPALS B&B PATHFINDER 8106
LT FOREVER LADY 7038
ELLINGSON SALUTE 3170
PVF PROVEN QUEEN 3175

Lot 49 is a modest birthweight, high growth, genetic package in this outcross pedigree that is amongst the farm favorites for his extra length, extension and power. His dam, from the Proven Queen cow family, is one of our more consistent producers every year.

50 PVF KING PIN 4020

[bull *21018196] [calved: 02.07.2024]

	BEPD	WEPD	YEPD	MILK	\$C
EPDs	3.7	60	112	26	262

{ PVF DLX KING PIN 0058
PVF BLACKCAP 9114

PVF BLACKLIST 7077
PVF LUCY 4189
PVF INAUGURATION 6174
MC BLACKCAP 3057

Offering a full sib to many sale features, including Lot 4 in this catalog and the \$67,500 featured Lot 7 of the Fall Production Sale. Sired by the ABS featured King Pin, and his dam from the same cow family that produced the 2025 National Western Stock Show Grand Champion Bull, Lot 50 offers extra size and extension with a great herd sire look.

PVF BULLS

51 PVF OMEGA 4010

[cow *21034191] [calved: 02.05.2024]



BLC/MLA OMEGA 2258

PVF MISSIE 0221

	BEPD	WEPD	YEPD	MILK	\$C
EPDs	2.9	57	98	18	154
COLLISON ALPHA 028					
MLA PROVEN QUEEN 2058					
C&C PRIORITY 1428B EXAR					
PVF MISSIE 790					

Offering a high performing, moderate birthweight son of the Embryos On Snow featured sire BLC/MLA Omega 2258. 4010 is a stout structured, big footed, rugged constructed individual whose dam is a maternal sister to Insight.



BLC/MLA Omega 2258, sire of Lot 51.

52 PVF MINDSET 4074

[cow *21030340] [calved: 04.07.2024]



BOYD/MYERS MINDSET M750

PVF PROVEN QUEEN 5094

	BEPD	WEPD	YEPD	MILK	\$C
EPDs	2.1	55	100	11	285
HOOVER NO DOUBT					
THOMAS BUTTERFLY 4742					
PVF INSIGHT 0129					
DAMERON PVF PROVEN QUEEN010					

Some of the first offspring from our newest partnership with ST Genetics, the sire of Lot 52, Boyd Myers Mindset M750, has met all our expectations. He is providing outcross genetics while still maintaining the look and structural correctness we demand. Combining Mindset with this powerful Proven Queen donor dam gave us a high ribeye, high growth herd sire that maintained modest birthweights.



BOYD/MYERS Mindset M750, sire of Lot 52.

53 PVF KING PIN 4011

[cow *21018194] [calved: 02.05.2024]



PVF DLX KING PIN 0058

PVF BLACKBIRD 7001

	BEPD	WEPD	YEPD	MILK	\$C
EPDs	1.4	54	85	17	160
PVF BLACKLIST 7077					
PVF LUCY 4189					
COLBURN PRIMO 5153					
ALL PVF BLACKBIRD 645					

An extra stout, square built, attractive profiling King Pin son, whose dam is the direct daughter of the legendary 645. PVF Blackbird 7001 was a feature of our Fall 2024 Production Sale, selling to the Hildebrand family in California.



PVF DLX King Pin 0058, sire of Lot 53.

PVF BULLS



54 PVF BLACKLIST 4308

[cow +*21030345] [calved: 03.09.2024]



PVF BLACKLIST 7077
PVF LUCY 4189

BEPD	WEPD	YEPD	MILK	\$C
EPDs 1.6	56	94	24	215
PVF INSIGHT 0129				
PVF BLACKBIRD 3070				
C&C PRIORITY 1428B EXAR				
THOMAS LUCY 7360				

One of the youngest bulls in the sale has worlds of potential to this full brother to King Pin. His famous dam, PVF Lucy 4189, not only produced the ABS sire, King Pin, but also the lead off bull in this offering and numerous featured heifer calves in past production sales.



55 PVF MINDSET 4066

[cow *21028614] [calved: 03.31.2024]



BOYD/MYERS MINDSET M750
PVF PROVEN QUEEN 4032

BEPD	WEPD	YEPD	MILK	\$C
EPDs 3.3	80	126	12	266
HOOVER NO DOUBT				
THOMAS BUTTERFLY 4742				
PVF INSIGHT 0129				
PVF PROVEN QUEEN 2106				

A true power bull in this late March herd sire prospect. Lot 55 displays incredible muscle shape, boldness of rib, and width from end to end. He has top end ribeye and growth data. His famous donor dam recently produced the Supreme Champion Female at the San Antonio Stock Show, and the past National Junior Angus Show Grand Champion Bull, PVF TCF Frozen 6078.



56 PVF CHIEFTON 4054

[cow *21026454] [calved: 03.08.2024]



LT CHIEFTON 1440
PVF PROVEN QUEEN 0237

BEPD	WEPD	YEPD	MILK	\$C
EPDs 2.3	77	131	24	234
KOUFALS B&B PATHFINDER 8106				
LT FOREVER LADY 7038				
PVF BLACKLIST 7077				
PVF PROVEN QUEEN 2157				

This high growth, moderate birthweight son of the outcross sire L/T Chiefton 1440 whose dam is a square built, stout structured, beautiful young cow from the Proven Queen family.

PVF BULLS

57 PVF TRUE NORTH 4501

[cow 21032074] [calved: 01.16.2024]



SQUARE B TRUE NORTH 8052
REESER LUCY 2031

	BEPD	WEPD	YEPD	MILK	\$C
EPDs	0.1	58	104	33	281

SAV RAINFALL 6846
ELBANNA OF CONANGA 1209
CONNEALY COMMON GROUND
PVF LUCY 0021

Combining calving ease with elite carcass traits in this outcross pedigree, Lot 57 is sure to find fans on sale night. He is a huge middled, long bodied, sound structured bull whose dam, sired by our Connealy Common Ground herd sire, traces back to the Lucy cow family.



58 PVF OMEGA 4413

[cow +*21034346] [calved: 02.26.2024]



BLC/MLA OMEGA 2258
PVF PROVEN QUEEN 8256

	BEPD	WEPD	YEPD	MILK	\$C
EPDs	5.2	74	115	10	182

COLLISON ALPHA 028
MLA PROVEN QUEEN 2058
PVF INSIGHT 0129
PVF PROVEN QUEEN 5250

An Omega son of the famous PVF Proven Queen 8256. She has generated more dollars in recent sales than any donor in our lineup. Line bred to the Proven Queen cow family, Lot 58 is stout structured with a great look.



59 PVF MINDSET 4040

[cow *21019350] [calved: 02.24.2024]



BOYD/MYERS MINDSET M750
PVF MISSIE 0087

	BEPD	WEPD	YEPD	MILK	\$C
EPDs	2.7	60	94	20	233

HOOVER NO DOUBT
THOMAS BUTTERFLY 4742
C&C PRIORITY 1428B EXAR
PVF MISSIE 0084

Concluding the bull offering with a son of the ST sire, Boyd/Myers Mindset M750. Lot 59's dam is a full sister to such famous donors as PVF Missie 4149, PVF Missie 6298 and PVF Missie 0227.



PVF BULLS

EMBRYOS

Each embryo package consists of Three Grade One and/or Grade Two embryos that have been frozen by Trans Ova Genetics. All embryos selling are IVF direct thaw. We will guarantee Grade Two embryos just like Grade Ones and feel that the eggs we are representing are of the best quality.

We will guarantee the establishment of at least one 60-day pregnancy per three embryos transferred, if the following conditions are met:

- A. The transfers must take place within one year of the sale date.
- B. Transfers are performed by a licensed embryologist.
- C. We are notified within a reasonable period of time of the failure to produce a pregnancy.

Buyers of embryo packages that fail to establish at least one pregnancy will be given an additional embryo from the seller from the same mating if available, or if the buyer chooses another of similar value.

Embryos selling are Sexed Female IVF embryos but are not guaranteed to result in a female pregnancy, our extensive experience with sorted semen would indicate that in excess of 95% of resulting pregnancies will be female.

60 PVF LUCY 4189

- 60A PVF BLACKLIST 7077
- 60B STAG GOOD TIMES 201 ET (NON-SEXED)

Sibs to PVF DLX King Pin 0058.

PVF Lucy
4189



61 PVF MISSIE 6228

- 61A PVF MARVEL 9185

Sibs to Lots 7 - 10 from this now deceased donor.

PVF Missie
6228



62 PVF PROVEN QUEEN 8256

- 62A STAG GOOD TIMES 201 ET
- 62B BLC/MLA OMEGA 2258

Sibs to Lots 11-14.

PVF Proven
Queen
8256



63 PVF PROVEN QUEEN 5186

- 63A PVF MARVEL 9185
- 63B PVF CAPONE 2104

Sibs to Lot 27.

PVF Proven
Queen
5186



64 PVF BLACKBIRD 2201

- 64A PVF DLX KING PIN 0058

Sibs to Lots 1-3.

PVF
Blackbird
2201



PVF EMBRYOS

65 PVF BLACKCAP 9114

65A PVF DLX KING PIN 0058

65B PVF CAPONE 2104

Sibs to Lots 4-6.

PVF
Blackcap
9114



66 PVF BLACKBIRD 8197

66A STAG GOOD TIMES 201 ET

66B PVF DLX KING PIN 0058

Sibs to Lot 24.

PVF
Blackbird
8197



67 A/F ANDERSON'S MISSIE 914

67A PVF CAPONE 2104

67B PVF MARVEL 9185

Daughter of the famous PVF Missie 0084.

A/F
Anderson's
Missie 914



ADDED *Value*

We take the business of breeding better Angus seriously.
We understand that you have many options of where to invest in
Angus genetics, so we attempt to go above and beyond to differentiate ourselves.

DNA TESTING ... We began DNA testing every female born at PVF nine years ago. Animals in this sale have been DNA verified for parentage and will display genetically enhanced EPD's. We believe the more you know about your purchase the more predictable the outcome will be not only as a show project but as a breeding piece. This starts with making sure that the animal you buy is exactly what we think it is.

HERD HEALTH ... In addition to our normal herd health vaccinations, all sale heifers were BVD tested, with results appearing with their DNA results on the American Angus Association website. We realize many shows require this test so we can provide that information for you if necessary.

DISPOSITION ... We understand that most of these calves will see the showing and in many cases with younger exhibitors. These calves have not only been broke to tie but have also been led extensively and had show stick work. This does not necessarily mean they are show broke and they will still need work at their new homes, but we have done our best eliminate any potential problems. If you have specific questions or concerns, please contact us.

IDENTIFICATION ... All animals have tattoos in both ears and have visual as well as EID tags. EID information has been submitted to the American Angus Association and is on file as the primary identification with tattoo as secondary. Tattoos fade and EIDS get lost so please double check before showing and let us know if there are any issues we can help with.

REGISTRATION ... All animals are registered with the American Angus Association. Papers are stored electronically and ready for immediate transfer upon payment.

PRAIRIE VIEW FARMS
10788 N. 250 E. Road
Gridley, IL 61744

**FIRST CLASS
PRE-SORTED
PAID**
Montezuma, Iowa
Permit No. 30



SPRING PRODUCTION SALE

15th Annual

Friday Night, April 4, 2025

6:30 p.m. | at the farm | Gridley, Illinois | Or watch Live on CCI.Live